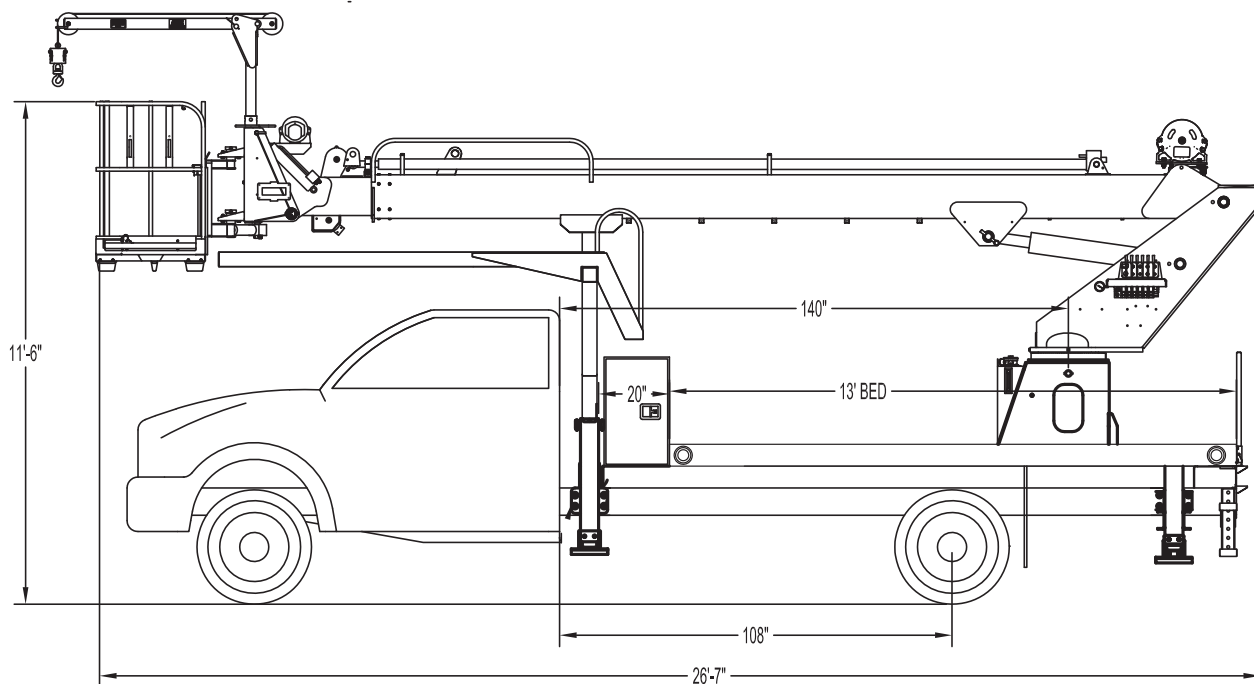




M43 SIDE VIEW DIAGRAM



Dimensions approximate and vary with truck specifications.

- | | | | |
|--|--------------------|---|--------------------|
| • Working Height | 48'/14,6 m | • Powered Boom Sections | 2 |
| • Working Side Reach | 36'/11 m | • Overall Height | 11'6"/3,5 m |
| • Platform Capacity | 500 lbs/227 kg | • Unit Weight (Bare) | 8,500 lbs/3,855 kg |
| • Platform Size | 30x54 in/76x137 cm | • Outrigger Spread Main | 10'5"/3,2 m |
| • Platform Type | End-Hung | • Outrigger Spread Auxiliary | 8'/2,4 m |
| • Lifting Capacity (Main Winch) | 2,000 lbs/907 kg | • Front Gross Axle Weight Rating | 7,000 lbs/3175 kg |
| • Jib Winch | 500 lbs/227 kg | • Rear Gross Axle Weight Rating | 12,500 lbs/5670 kg |

TECHNICAL SPECIFICATIONS

Maximum Platform Height: 43' ground to platform floor.

Working Range: 48' max. working height and 36' max. side reach.

Work Platform: 30"x54" EZR end-hung work platform with 40" high rails. Equipped with two safety lanyard attachment loops and two safety harnesses and 72" lanyards. Platform capacity 500 lbs.

Platform Leveling System: Hydraulic system consisting of twin platform cylinders interacting with electro-proportional level sensing system. Remote releveling controls provided in platform and at ground controls to give precise leveling capability.

Platform Controls: Three individual proportional electronic controllers meter pilot-operated, pressure-compensated modulating valves. Remote controls for boom operations from platform operate from a removable remote control box. Hi/Lo range, start/stop and engine speed toggle controls are also located at platform. Electric remote control cable extends through the electrical slip ring to cable carrier on side of boom to extending boom sections.

Lower Controls: Mounted on roadside of turret.

Outrigger Controls: Parallel open-center valve for lever-operated control of right and left outriggers. The outrigger valves are mounted at the rear, under each corner of the bed with roadside valve controlling roadside outriggers and curbside valve controlling curbside outriggers.

Outriggers: Vertical stabilizers with 8' spread and "A" type underslung outriggers with 10'5" spread.

Frame: One piece, all welded, box-type fabrication.

Turret: Reverse offset turret is one-piece weldment mounted on turret box. Turret

rotates on large diameter ball bearing.

Rotation: Continuous turret rotation with no stops. Hydraulic motor drives turret through self-locking gear box.

Boom: Steel rectangular tube sections. Assembly includes heavy-duty cylinder fittings, pivot pins, and replaceable wear pads.

Boom Extension: Single extension cylinder to extend the boom section.

Lift: One single-acting full displacement, long stroke cylinder, provides smooth and stable boom elevation. Holding valve prevents boom from falling in event of hose failure.

Cylinders: All cylinders use microhoned cylinder tubing, chrome shafts, top grade packing and protective rod wipers. Cylinder-mounted holding valves provided on all load-holding cylinders.

Hoses: All high pressure hoses are wire braid reinforced with a minimum safety factor of 4 to 1.

Oil Tank Capacity: 18 gallon mounted to turret box.

Hydraulic System: Operating pressure is 2,250 PSI. System is parallel open center type and is equipped with liquid-filled pressure gauge. Oil is supplied to upper cylinders through hydraulic union in center of turret to cable carrier inside of the boom.

Pump: Gear type, direct mount to truck PTO.

PTO: Heavy-duty, high-speed with switch in cab.

Cab Equipment: PTO switch with indicator lights installed in truck cab. Engine speed control and start/stop installed with control switches in platform remote control box and also located at lower controls. U/L approved 5:BC dry chemical fire extinguisher installed in truck cab.

Operators Manual & Video: Two CDs and one printed copy of operation, maintenance, safety and parts manual provided with each unit. Operational and safety video provided at delivery.

Installation: Unit installed on truck, painted, system and tank filled with oil, tested, inspected, and ready to operate.

Standard Paint: Paint boom and turret red, outriggers red, and bed and boxes black. Top of steel bed painted with black nonskid surface.

Bumper: Bureau of Motor Carrier Safety rear bumper.

Weight: Approximately 8,500 lbs. with 13' steel-floor bed less truck.

Truck Chassis Required: Approx. 108" C.A., 7,000 lb. front axle and 19,500 lb. GVWR required. Trucks must have increased cooling, heavy-duty front and rear springs, 12V electrical system with high capacity alternator, cab clearance stop/tail/backup lights, and I.D. lamps. Recommended GVWR is minimum for HiReach with flatbed only. Contact factory when additional equipment is to be added.

Options:

500 lb Capacity Platform Material Handling Jib.

2,000 lb Capacity Material Handling Main Winch

110 Volt Line to Platform

Welder Leads to Platform

Cab Guard Walkway to Platform

98" x 18" x 18" Steel Cross Body Box

Custom Toolbox Packages

Modified Outriggers for Larger Chassis

Custom Paint Packages

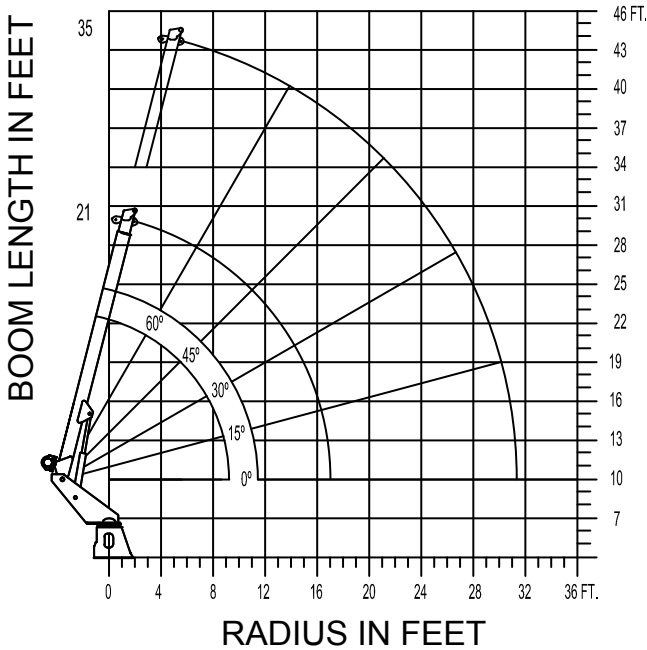
Much More....

Elliott Equipment Company reserves the right to change the specification of any unit at any time without prior notice. This brochure is only a statement of general specifications on the date of this publication. For more detailed info on specific Elliott trucks go to www.elliottequip.com

MAXIMUM WINCH LIFTING CAPACITY



MODEL M43



MAXIMUM MATERIAL HANDLING WORKING LOADS

WINCH LINE LOAD (POUNDS) ON BOOM SHEAVE WITH PLATFORM REMOVED.

21' BOOM LENGTH		
RADIUS (FT.)	ANGLE (DEG.)	LOAD (LBS.)
5	67	2,000
6	64	2,000
8	58	2,000
10	51	2,000
12	45	1,400
14	34	1,200
15	30	1,200
16	21	1,100
17.5	0	1,100

35' BOOM LENGTH		
RADIUS (FT.)	ANGLE (DEG.)	LOAD (LBS.)
6	75	2,000
8	71	2,000
10	69	2,000
12	64	1,600
14	60	1,400
16	55	1,100
18	53	800
22	45	700
27	30	650
30	15	550
31.5	0	500

USE OUTRIGGERS AT ALL TIMES * AVOID JERKING LOADS 360° DEDUCT 200 LBS. WITH PLATFORM ATTACHED

1211070 02122016

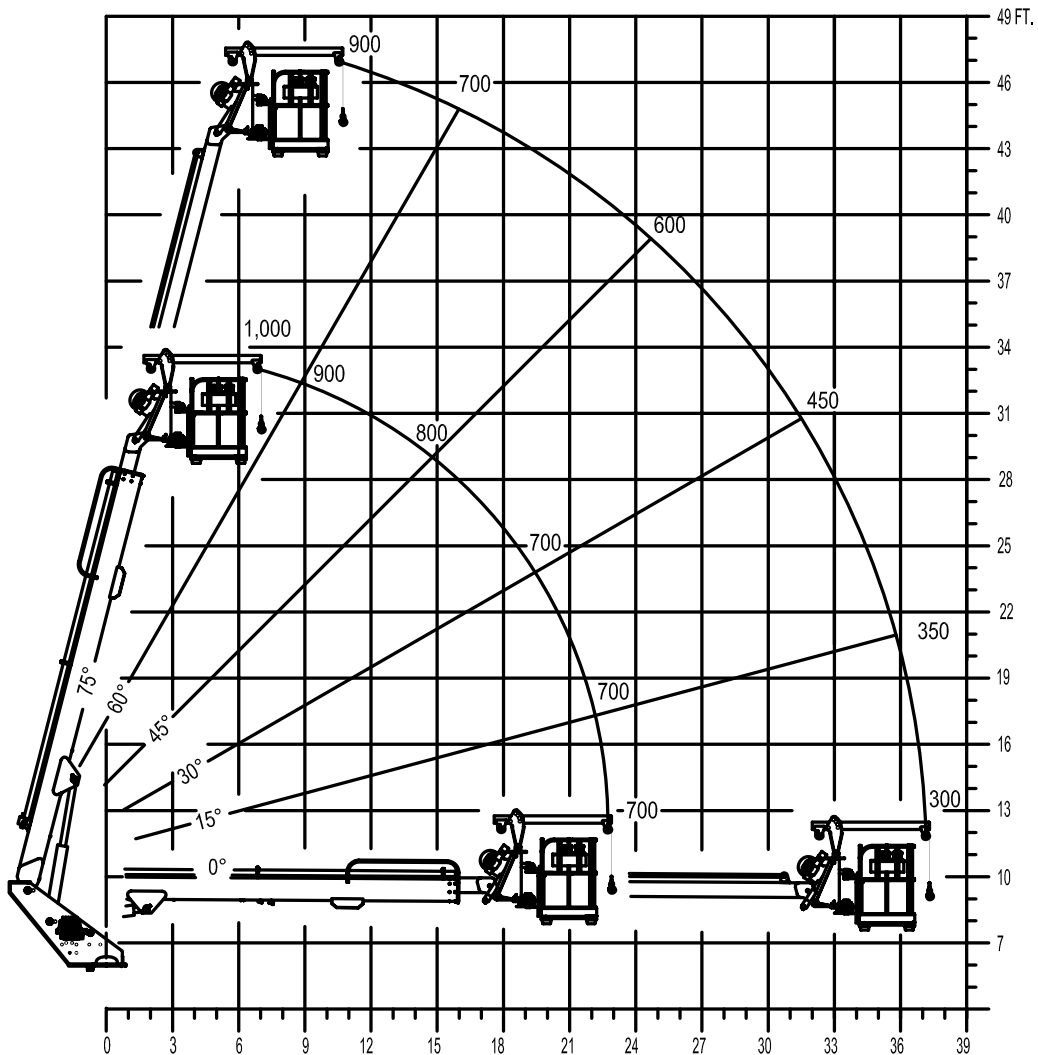
MAXIMUM JIB LIFTING CAPACITY

**MAXIMUM WORKING LOADS
PLATFORM JIB OPERATION**

MODEL M43

TOTAL PLATFORM CAPACITY (JIB LOAD PLUS PERSONNEL)

USE OUTRIGGERS AT ALL TIMES • AVOID JERKING LOAD
360° RADIUS



JIB 500 LBS. MAXIMUM • PERSONNEL 500 LBS. MAXIMUM

CHASSIS DATA

	M43
Wheelbase (WB)	192.5" / 489 cm
Cab to Axle (CA)	108" / 274 cm
Cab to End of Frame (EOF)	190" / 483 cm
Front Axle Gross Weight Rating	7,000 lb / 3175 kg
Rear Axle Gross Weight Rating	12,500 lb / 5670 kg
Extended Front Frame	N/A

Chassis data is minimum general requirements-not for engineering.
Actual dimensions and truck data will depend on truck selection and axle configuration.

OPTIONS



Walkway Access to Platform

Choose Elliott's optional steel platform walkway above the cab for easy platform access with the boom stowed in the over-cab position.



Material Handling Jib

Equip your HiReach platform with a removable material handling jib to handle up to 500 pounds on the load line.



Material Handling Main Boom Winch

Elliott's 2,000 lb capacity hydraulic main winch allows for lifting loads using the lower turret controls with the platform attached or removed.



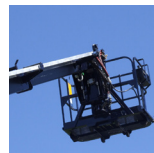
Outrigger Pad Holders

Outrigger pad holders safely store your pads for travel and easy removal on the job site with reduced strain. Available for wood or synthetic pads.



Bed Accessories

Mount a wide variety of tool accessories including welders and generators on the bed with leads to the platform.



Platform Accessories

Choose from a list of platform accessories including 110V outlets, welding leads and more using the oversized external cable carrier outside the boom.



Custom Design Engineering

Customize your HiReach by adding lights, tools, special paint, and much more. Let Elliott's engineering team design the right configuration for your business.



Line Body

Let us work with you to customize a line body to secure your tools and supplies the the best way for your application.