

## KEY FEATURES

- » Telescopic three-section boom with smooth 'point and shoot' functionality
- » SMARTControl system provide smooth, precise operation and remote diagnostics
- » Top-mounted two-person steel work platform
- » New design allows 1,000 lb material handling and 500 lb jib
- » Full length subframe for unmatched stability
- » 9' hydraulic outriggers allow full setup in a single parking space
- » Great versatility and functionality on a non-CDL chassis



### SMARTControl System

Provides touchscreen/manual button operation, smooth and precise upper controls and Bluetooth connectivity to Elliott service.



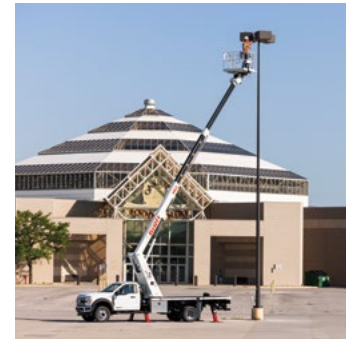
### High Capacity Boom Tip Winch

The 1,000 lb material handling winch option converts the HiReach into a combination aerial work platform and material handler.



### Narrow Outrigger Spread

An 9 foot spread provides full 360 degree operation, allowing setup in areas as tight as a single parking stall.



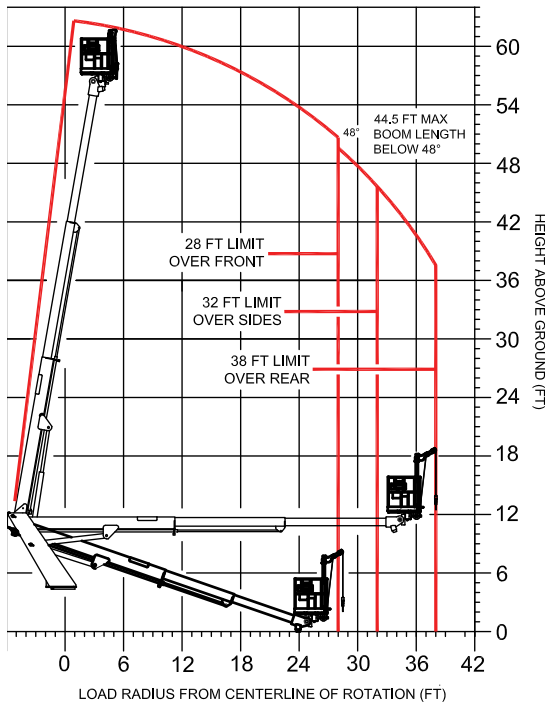
### Compact, Versatile Design

Engineered to be installed on a 19,500 lb GVWR chassis with plenty of room for toolboxes and storage.

## OTHER FEATURES

- » **Work Platform:** Electronic self-leveling and rotating steel 40" x 60" top-mounted work platform. Features 180 degrees of rotation. Upper control station available in either 4-single axis joysticks or 1-multi axis joystick for superior control flexibility
- » **Hydraulic System:** Hydraulically powered continuous rotation mechanism. Holding valves on all cylinders. 12V Emergency pump.
- » **Outriggers:** "A" type hydraulically powered front and rear outriggers with 9' spread. Outrigger controls at ground level. 360 degree stability.
- » **High Capacity Boom Winch:** Versatile winch design allows for 1,000 lb material handling or easily converts to 500 lb jib in the platform.
- » **Certification:** Certified to ANSI A92.2 for Vehicle-Mounted Elevating and Rotating Aerial Devices.

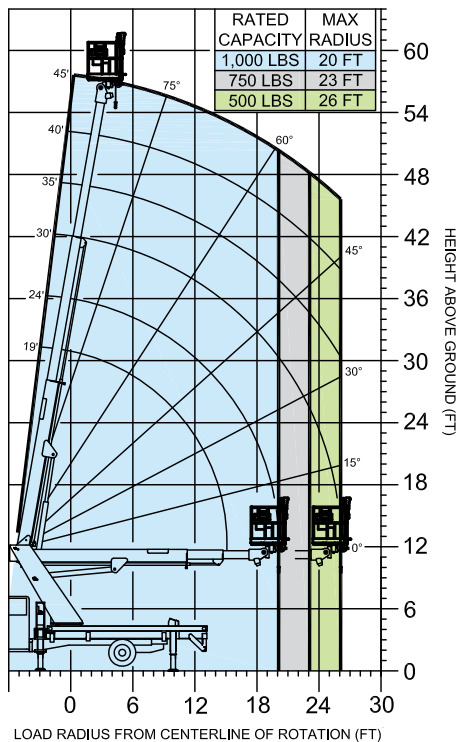
**AERIAL PLATFORM WORKING RANGE**



**TECHNICAL SPECIFICATIONS**

<b>Working Height</b>	63' / 19,2 m
<b>Working Side Reach</b>	38' / 11,6 m
<b>Platform Capacity</b>	500 lb / 227 kg
<b>Platform Size</b>	40" x 60" / 102 x 152 cm
<b>Main Winch Capacity</b>	1,000 lb / 453 kg
<b>Jib Winch Capacity</b>	500 lb / 227 kg
<b>Front Outrigger Spread</b>	9' / 2,7 m
<b>Rear Outrigger Spread</b>	9' / 2,7 m
<b>Minimum GVWR</b>	19,500 lb / 8845 kg

**MAIN HOIST LOAD RATINGS**



**AVAILABLE OPTIONS**

- » 500 lb Capacity Stowable Jib Winch in the Work Platform
- » 1,000 lb Capacity Main Winch
- » 110V Line to the Work Platform
- » (2) Sign Forks on Work Platform
- » Cold Climate Hydraulic Oil Heater
- » Steel, Wood or Aluminum Flatbeds
- » Steel, Aluminum or Fiberglass Service Bodies
- » Steel or Aluminum Toolboxes
- » Composite or Wooden Outrigger Pads
- » Painted White, Red or Custom Colors
- » Radio Remote Controls
- » Much more...