

V0-452-455-460 MHI

Insulated Articulated Overcenter Aerial Lift

MAXIMUM WORKING HEIGHT: Up To 65' 7" (20 m)

MAXIMUM HORIZONTAL REACH OVERCENTER: 53' 3" (16.2 m)

MAXIMUM PLATFORM CAPACITY-SINGLE2-MAN: Up To 700 lbs. (318 kg)

MAXIMUM JIB CAPACITY: 2000 lbs. (900 kg)



The **VERSALIFT** product line has grown to encompass models for every market. Whether it be a 29' man lift or a 180' material handler, there is a **VERSALIFT** to get the job done.

For More Information
Versalift
254.399.2100
www.VERSALIFT.com

VO-452-455-460 MHI

Insulated Articulated Overcenter Aerial Lift

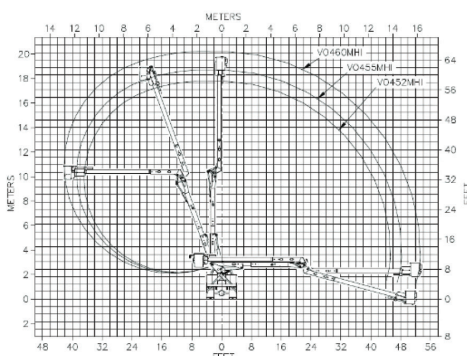


GENERAL SPECIFICATIONS

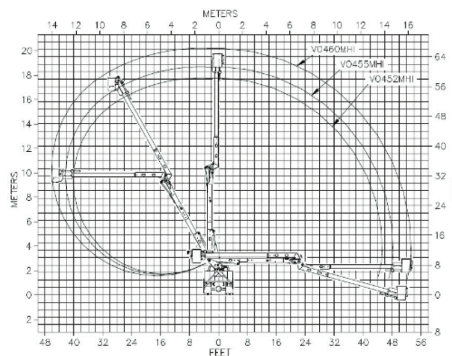
	VO-452	VO-455	VO-460
Height to Bottom of Platform	52.7' (16.1 m)	55.7' (17 m)	60.7' (18.5 m)
Working Height	57.5' (17.5 m)	60.7' (18.5 m)	65.7' (20 m)
Horizontal Reach Overcenter	45.3' (13.8 m)	48.3' (14.7 m)	53.3' (16.2 m)
Horizontal Reach Non-Overcenter 102°	34.2' (10.4 m)	36' (11 m)	39' (11.9 m)
Horizontal Reach Non-Overcenter 110°	36.9' (11.2 m)	39' (11.9 m)	42.3' (12.9 m)
Horizontal Reach Non-Overcenter 120°	40.2' (12.3 m)	42.5' (13 m)	46.2' (14.1 m)
Platform Capacity (Single 1-Man)	400 lbs. (180 kg)	400 lbs. (180 kg)	400 lbs. (180 kg)
Total Platform Capacity (Single 2-Man)	700 lbs. (318 kg)	700 lbs. (318 kg)	500 lbs. (227 kg)
Total Platform Capacity Dual 1-Man	700 lbs. (318 kg)	700 lbs. (318 kg)	Not Available
Total Platform Capacity Dual 1-Man (Dual Controls)	700 lbs. (318 kg)	700 lbs. (318 kg)	Not Available
Upper Boom Articulation	195°	195°	195°
Lower Boom Articulation	102°, 110°, or 120°	102°, 110°, or 120°	102°, 110°, or 120°
Stowed Travel Height	11.5' (3.5 m)	11.5' (3.5 m)	11.5' (3.5 m)
Maximum Jib Capacity	2000 lbs. (900 kg)	2000 lbs. (900 kg)	2000 lbs. (900 kg)
Lower Boom Lift Eye Capacity	2500 lbs. (1100 kg)	2500 lbs. (1100 kg)	2500 lbs. (1100 kg)
Hydraulic System Pressure	3000 psi (210 kg/cm ²)	3000 psi (210 kg/cm ²)	3000 psi (210 kg/cm ²)
Hydraulic System Type	Open Center	Open Center	Open Center
Upper Boom Insulation Gap	13' 2" (4.0 m)	13' 2" (4.0 m)	15' 7" (4.8 m)
Lower Boom Insulation Gap	12" (30 cm)	24" (60 cm)	24" (60 cm)
Aprox. Weight of Lift with Pedestal	6900 lbs. (3150 kg)	7000 lbs. (3200 kg)	7200 lbs. (3300 kg)
Ambient Temperature Range for Structural Integrity	-40°F (-40°C) to 125°F (52°C)		

NOTE:

1. Specifications may vary without prior notice
2. Required GVWR can vary significantly with chassis, lift mounting, location service body, accessories, and desired payload.



110° Lower Boom Articulation



120° Lower Boom Articulation

OPTIONS:

- Dual Upper Controls
- TruGuard™
- Hydraulic Extend Hydraulic Tilt Jib & Winch
- Backup Pump
- Automatic Boom Latch
- X-Frame Outriggers, Flip Foot
- Category B Dielectric Testing & Certification
- Platform Elevator (Single Platform Only)