

## Kodiak K10 DD Combo Tracked Digger Derrick CARRIER SPECIFICATIONS

### DIMENSIONS / WEIGHT

Overall Length	299" boom in storage position
Overall Width	102" with outriggers stored
Height	138" with boom stored
Ground Clearance	20"
GVW	44,000 lbs
Basic Vehicle Weight	39,700 lbs (with derrick)
Payload	4,300 lbs
Deck Area	42 ft <sup>2</sup> (approx. 72" x 84")

### PERFORMANCE DATA

Maximum speed	7.5 mph
Inside turning radius	0 ft.
Climbing Ability	
- Uphill	35° (70%)
- Side-hill	20° (36%)
Ground Pressure (empty)	4.78 at 6" penetration
Ground Pressure (loaded)	5.89 at 6" penetration
Tank Working Range	18 Hours

### ENGINE

Make	Kubota 09 Series
Model	V5009-TIE5
Type	4 cylinder, Tier 4, Turbo Charged Diesel
Displacement	5.0 liters
Horsepower	210 HP at 2,050 RPM
Torque	651 ft/lbs at 1,500 RPM
Fuel tank	120 gallons
Working range	12 hours
DEF tank	10.5 gallons
DEF tank fill	Every 4 <sup>th</sup> fuel tank fill

### STANDARD FEATURES

1-Man Open Cab ROPS certified  
 Seat with mechanical suspension, 2-point seat belt  
 Full instrumentation, illuminated panel gauge  
 Fire extinguisher, backup alarm and horn  
 Side deck ladder & rear folding step  
 Wooden side wall/deck  
 LED high powered lights – 2 front & 1 rear on cab,  
 1 strobe on top, rear back up (& working) light  
 Block heater, secondary fuel filter with water separator

### FRAME / SUSPENSION

Type	Corten Welded Tub
Suspension	Double walking beam with dual articulating bogie wheels

#### **Suspension system** comes with:

- 2 independent idler wheels with oil bath hubs and steel face seals
- 16 steel wheels, 14" dia
- 2 rear drive sprockets

### POWER TRAIN FOR HYDROSTATIC DRIVE

Transmission	Hydrostatic, 2-speed
Service Brakes	Positive deceleration through the hydrostatic transmission
Parking brakes	Multi-Disc, spring applied & pressure released

### ELECTRICAL

Voltage	12 V
(2) Batteries Capacity	2x 1,000 CCA
Alternator Capacity	150 Amps
Ground	Negative

### STEERING

Independent dual joysticks with cable control for each track

### TRACKS

One piece 28" rubber tracks with steel reinforcements

Muffler with spark arrestor  
 2x oil coolers for hyd oil reservoir  
 Electric engine shut down system  
 Rear receiver socket  
 Front and rear rectangular ground lugs  
 (4) 77" radial outriggers w/13" x 15" feet  
 (2) front & (2) rear 40,000 lb D-Rings  
 Spare radio transmitter & bucket level controller batteries & chargers  
 2 Sets of operations, parts & service manuals

\*All specifications subject to change without notice

## Kodiak K10 Digger Derrick/Aerial Lift Boom Specifications

Lifting Capacity:	24,000 lbs at 10' radius
Sheave Height:	48'
Tip Winch Capacity:	12,000 lbs on 2 <sup>nd</sup> boom
Tip Winch Rope:	85 ft of 1" nylon 12,000 lbs rated rope with swivel hook
Digging Radius:	15' to 23'

- Adjustable boom support installed at the front of the cab
- Three stage telescoping boom with hydraulically extendible second and third stage boom.
- Hydraulic 4 way pole claw on third stage boom tip
- Insulated fibreglass 3rd & 4th boom (Category "C" type booms: 46 kVA CSA standard C225-10, ANSI standard A92.2-2015 & ANSI standard A10.31 2013)
- Controls w/High Electrical Resistant Components (HERC)
- Boom tip metal parts enclosed in plastic
- Heavy duty continuous planetary rotation drive with slip brake
- 5 Function Automatic Hydraulic Overload Protection (HOP) system: protected functions: boom down, 1st extension, 2nd extension, winch & digger dig
- Hydraulic side load protection allows rotation system to back drive
- 12,000 ft lbs T-12 2.5" hex 2 speed auger drive with adjustable automatic kick down
- Full hydraulic flow from hydrostatic drive and two auxiliary pumps are sent to the auger drive providing approximately 85 HP when digging
- Curb side hydraulic auger stow with overstorage protection
- Auger storage for up to 24" diameter augers (inclusive)
- 18" dirt auger with 2.5" hex diameter & 104" OAL
- 45 gallon hydraulic oil reservoir with two electric oil coolers
- Engine stop/start controls at the turret pedestal and control console
- Boom seat with full pressure, all hydraulic, fully proportional controls
- Turret mounted capacity chart, console mounted pressure gauges for system & auger
- (4) Hydraulic 77" radial outriggers (with lock valves) at 45° for maximum stability
- Full-length heavy duty tubular steel sub frame directly attached to pedestal & outrigger mounts to constitute a complete integral unit
- Complete lubrication and operational testing prior to delivery. All adjustments to derrick and related systems made to factory recommended specifications prior to delivery

## Kodiak K10 Digger Derrick/Aerial Lift Folding 4<sup>th</sup> Boom with 2-Man Basket

Max bucket reach	81'
Fiberglass basket with step	24" x 42" x 42"
Bottom of basket	73' 2" (elevator down) 75' (elevator up)
Basket elevator	22"
Max side reach	37'
Basket capacity	550 lbs (Jib not in use) 400 lbs (Jib in use)
Max jib capacity	1,000 lbs
<b><u>STANDARD FEATURES</u></b>	
Side mount winch and jib	85° basket rotator
Hydraulically self-leveling basket	Winch and jib controls with lockouts at the bucket and the lower control
Rubber boom support	Hydraulic jib tilt
Safety harness and 6' decelerating lanyard	Hydraulic jib extension
Fiberglass extension boom	
46 KV category "C" insulation	
<b><u>RADIO CONTROL FUNCTIONS</u></b>	
Boom Digger mode / Boom Aerial mode	Hydraulic auger release
Boom cw/ccw	Auger dig/reverse
Boom up/down	Pole claw up down
1 <sup>st</sup> extension in/out	Pole claw open/close
2 <sup>nd</sup> extension in/out	Tip winch up/down
4 <sup>th</sup> boom in/out	Activate 12v emergency pump
4 <sup>th</sup> boom up/down	Basket elevator up/down
Engine start/stop & horn	Basket dump
Throttle up/down	Emergency stop & tilt emergency stop
<b><u>AVAILABLE 4<sup>th</sup> BOOM &amp; BASKET OPTIONS</u></b>	
Basket liner w/step (24" x 42" basket)	Tool circuit at basket, manual control
Rigid basket cover with lanyard	Tool tray (9" X 14" X 18")
Tool tray (8" X 19" X 9")	Tool tray fiberglass (7" x 7" x 16")

### Boom & Digger Options

Tip Winch	15,000 lbs on 2 <sup>nd</sup> boom with 85 ft of 1" nylon 15,000 lbs rated rope with swivel hook
Auger Drive Options:	<b>Change auger drive from 2.5 hex dia to 2 5/8" hex dia</b>
	<b>Change auger drive to 15,000 ft lbs T15K 3.0" hex dia,</b> 2 speed auger drive with adjustable automatic kick down
12v Emergency Power	Hydraulic auger release
Auger Types Available:	Powers boom rotation, lowering & all outrigger functions
	18"-36" dirt or rock augers
Kelly Bar Options	Other auger sizes, teeth, hex dia & brands available
	4', 5', 6' or 7' 6" Kelly bar
	Converting Kelly bar 2.5" hex F to 2.625" hex M, 6' long

## Kodiak K10 Digger Derrick/Aerial Lift Boom & Digger Options Continued

Two part line kit
Auger storage up to 36" augers
Hydraulic tools outlet on deck with hose reel with twin <b>orange</b> dielectric hoses 3/8" dia x 30' length, flow control for tamping only
Bi-directional flow valve & pressure control (2,000 to 3,000 PSI) for hyd tools outlet on deck for faster pole jacking
Tools outlet on deck back pressure limited to 200 PSI

## Kodiak K10 DD Combo Optional Equipment Front Options

Front 2 way heavy duty plow	
Hydraulic winch (fixed front mount)	25,000 lbs
	30,000 lbs

## Cab Options

Driver's wire mesh screen (open cab)
Driver's left side wire mesh door and side wall (open cab)
Driver's right side wire mesh screen (open cab)
Driver's rear wire mesh screen (open cab)
Aluminum escape hatch for open cab (when front & side are wire mesh )
Steel escape hatch for open or closed cab (adds FOPS certification)
Tinted safety glass escape hatch with adjustable opening
Protective Brush Guard for front LED Lights
Cab mounted front Brush Guard for Closed Cab
<b>1-man Closed Cab ROPS certified includes:</b> Aluminum escape hatch Sliding left & right side window Cab heater, Circulation fan Front windshield on-off wiper Door with dual locking system
Front windshield intermittent wiper (closed cab)
Sun visor
Driver's 3 point seat belt
Outrigger deployed in-cab warning light
Premium cab sound & heat insulation

## Kodiak K10 DD Combo Optional Equipment Continued

### Cab Options Continued

Street side rear view mirror
Street side rear view mirror with electric heating
Back up camera with heated lens and 7" in-cab waterproof display
DC Comfort air conditioning 6,000 BTU/hr, 12V

### Lighting Options

GoLight Stryker spotlight on top of cab with guarding & in cab & hand held remote controls
2x 120 watts LED light bars (behind the cab, swiveling & one fixed over the engine cover)
Outtrigger mounted clearance lights

### Engine & Cold Weather Options

12v engine coolant heater, 17,000 Btu with 7 day programmable timer
120v hydraulic oil tank heater
Insulated battery box
Coolant battery heater
2x 120v battery heaters
Synthetic hydraulic oil
1,800 watt gas powered portable generator / inverter with on deck storage

### Some Available Augers & Kelly Bars

18" dirt auger with 2.5" hex diameter
20" dirt auger with 2.5" hex diameter
24" dirt auger with 2.5" hex diameter
36" dirt auger with 2.5" hex diameter
18" rock auger with 2.5" hex diameter
20" rock auger with 2.5" hex diameter
24" rock auger with 2.5" hex diameter
36" rock auger with 2.5" hex diameter
Kentucky rock auger 18" with 2.5" hex diameter
<b>Change auger from 2.5 hex dia to 2 5/8" hex dia</b>
<b>Change auger from 2.5 hex dia to 3.0" hex dia</b>
2.5" hex dia solid Kelly bar 4' Long
2.5" hex dia solid Kelly bar 5' Long
2.5" hex dia solid Kelly bar 6' Long
2.5" hex dia solid Kelly bar 7' 6' Long
Converting Kelly bar 2.5" hex F to 2.625" hex M, 6' long

## Kodiak K10 DD Combo Optional Equipment Cont'd

### Vehicle Options / Features Continued

3" solid Kelly bar 6 ft long
Tool box on deck (front right curb side)
Non slip coating on deck
Ice cleats for outrigger feet (4 each foot)
12" wooden side wall on deck (removable)
(Set of 4) 24"x24"x1" soft outrigger pads with side deck storage
(Set of 4) 24"x24"x1.5" outrigger cavity pads with side deck storage
(Set of 4) 24"x24"x2" outrigger cavity pads with side deck storage
Hydraulic air compressor 80 CFM at 100 PSIG with air hose reel 50' x 3/4" pneumatic air hose rated 300 PSI
Hydraulic pole jack with soft ground pad, backing plate & deck mount storage
Cable grounding reel on deck, spring loaded, 50 ft 1/0 black cable & clamp
72" hydraulic pole tamper
7', 1 1/2" square 10,000 ft lb anchor drive tool with side deck storage
Anchor drive locking dog assembly & Kelly bar adaptor (2.5" dia) with on deck storage
7', 1 1/2" square 15,000 ft lb anchor drive tool with side deck storage
3.5' anchor drive tool extension wrench
<b>Change anchor tooling from 2 1/2" to 2 5/8" dia</b>
Spare auger holder on deck
Pintle hook
Maintenance kit (high performance filter set for first 100 hour maintenance return & supercharge filters & engine oil)
Additional set of manuals
Recommended spare parts for remote operations
One full day on site Operations & Maintenance Training


### Other options available upon request

\*Specifications subject to change without notice



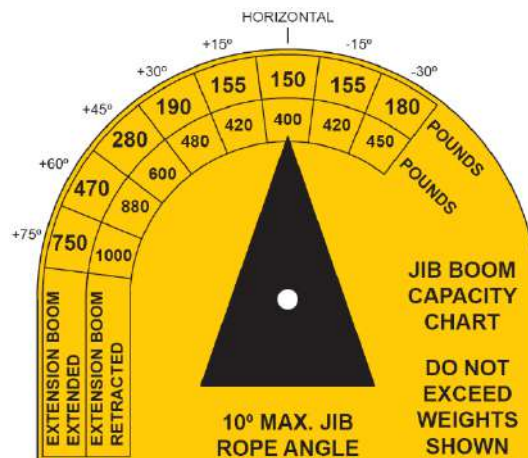
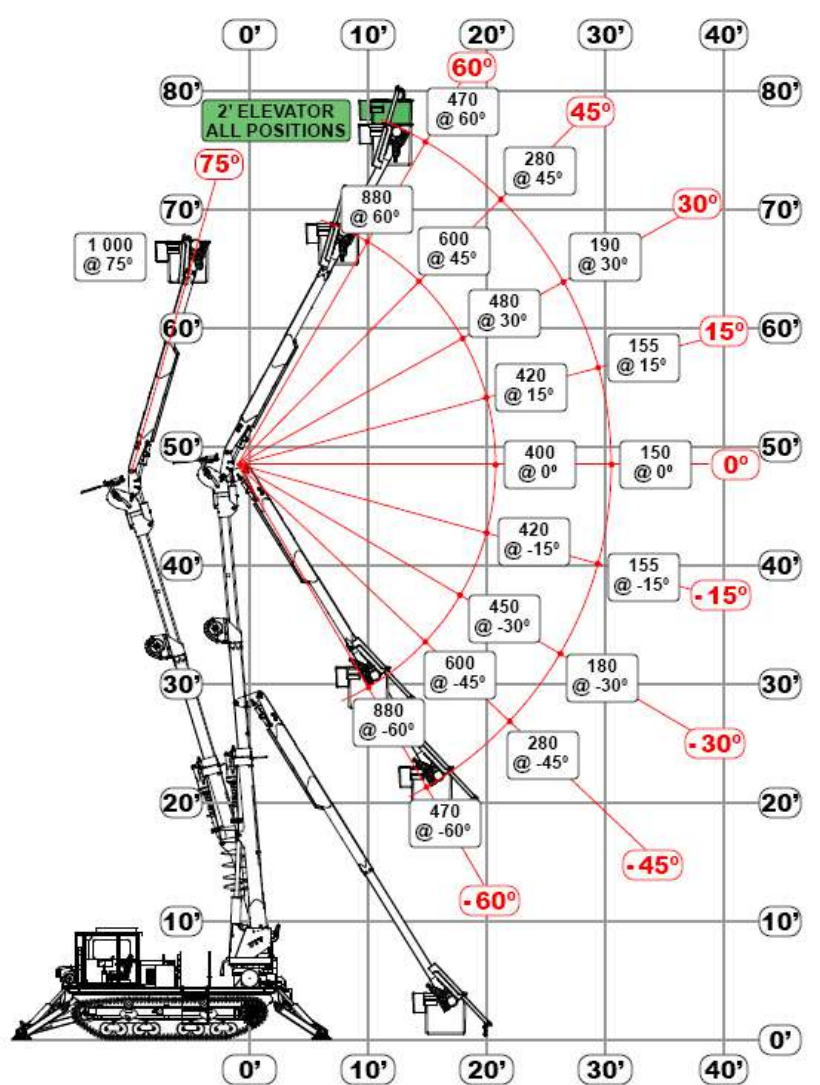
## Kodiak K10 DD Combo Tracked Digger Derrick

### Load Chart

							
All Retracted				3rd Boom Out			
Angle	Reach feet	Sheave Height feet	Safe All Around Work Load lb	Angle	Reach feet	Sheave Height feet	Safe All Around Work Load lb
-20	19.1	0.4	8750	-20	27.8	-2.8	4260
0	20.7	7.5	8500	0	30.0	7.5	4000
15	20.2	13.0	9000	15	29.2	15.4	4140
30	18.4	18.1	10500	30	26.5	22.8	4620
40	16.4	21.2	12500*	40	23.6	27.2	5220
50	14.0	23.9	15500*	50	20.0	31.0	6220
60	11.1	26.2	21000*	60	15.8	34.2	9200
70	7.9	27.9	24000*	70	11.1	36.6	14620*
80	4.4	29.0	24000*	80	6.2	38.1	24000*
2nd Boom Out				All Out			
-20	27.8	-2.8	4400	-20	37.9	-5.8	2400
0	29.7	7.5	4200	0	39.0	7.5	2100
15	28.9	15.3	4500	15	37.9	17.7	2500
30	26.2	22.6	5600	30	34.3	27.3	3200
40	23.3	27.0	6900	40	30.5	33.0	4300
50	19.8	30.8	9200	50	25.8	37.9	6000
60	15.6	33.9	13000*	60	20.3	42.0	9000
70	11.0	36.5	20800*	70	14.1	45.1	12000
80	6.0	38.1	24000*	80	7.6	47.0	23000*
* TWO PART LINE ABOVE 12000LB							
- Capacities based on 85% of vehicle tipping loads. - All outriggers must be extended and set firmly on the ground. - Vehicle MUST be leveled to within +/- 5° before operation.							

## Kodiak K10 DD Combo Tracked Digger Derrick

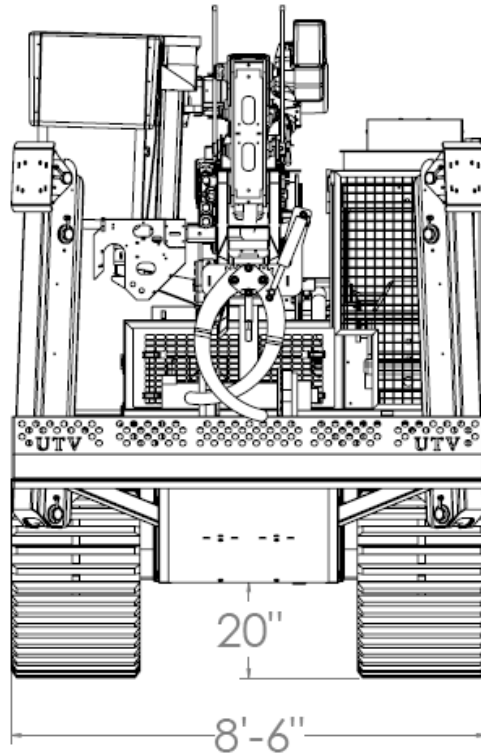
### Jib Load Chart





## Kodiak K10 DD Combo Tracked Digger Derrick

### Dimensions



## Kodiak K10 DD Combo Tracked Digger Derrick

### Dimensions

